

FOR SALE



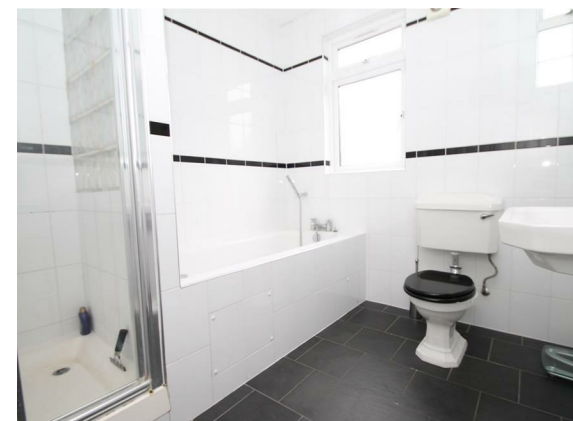
St. Georges Road, Palmers Green, London, N13
Offers In Excess Of £725,000 Freehold

Anthony Webb
ESTATE AGENTS

St. Georges Road, Palmers Green, London, N13

ROUND BAY EDWARDIAN HOUSE OFF FOX LANE N13. Requiring some MODERNISATION Anthony Webb are delighted to offer for sale this well proportioned three bedroom family home with lots of original features. The property is located in a popular residential turning within easy reach of both Palmers Green and Southgates amenities, parks and transport facilities. The ground floor consists of a good size hallway with original front door and tessellated tiled hallway, a living room with an original style fireplace, ceiling features and wood floor, a dining room with French doors to garden and a modern kitchen. The first floor offers two double bedrooms, a single bedroom, a modern bath/shower room and loft space with potential to convert. Further benefits include gas central heating, off street parking and a 100ft approx rear garden. An internal viewing is essential to fully appreciate the potential of this family home.

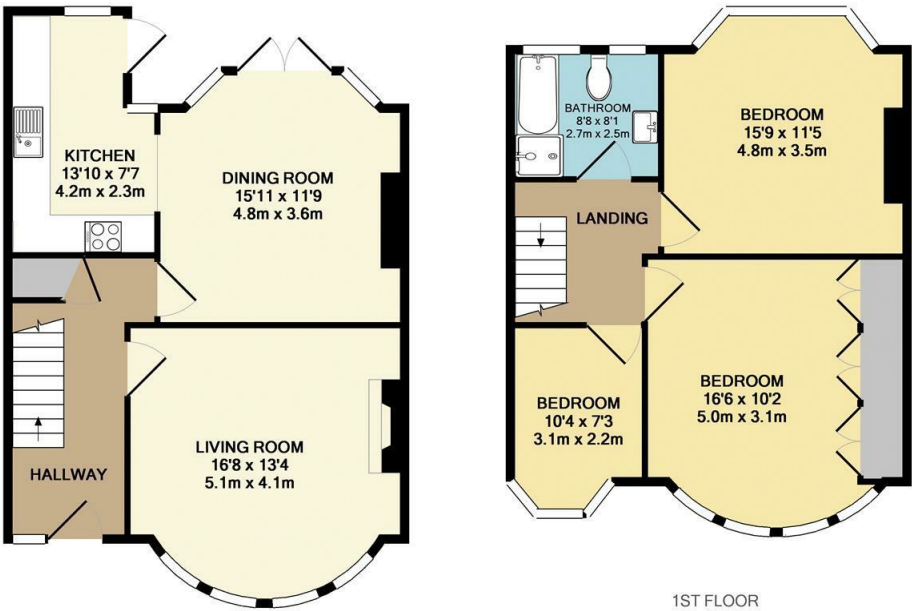
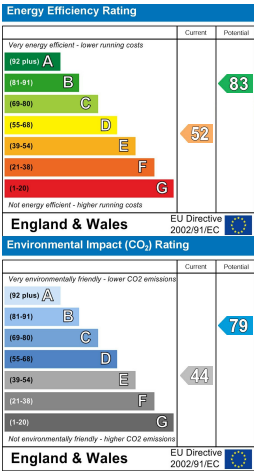
- Three Bedrooms
- Edwardian House
- Two receptions
- Modern kitchen
- Many original features
- Popular residential turning
- Modern bath/shower room
- Good size rear garden





St. Georges Road
Palmers Green
London
N13 4AT

Tenure: Freehold
Gross Internal Area: 1141.00 sq ft



GROUND FLOOR

TOTAL APPROX. FLOOR AREA 1141 SQ.FT. (106.0 SQ.M.)
Whilst every attempt has been made to ensure the accuracy of the floor plan contained here, measurements of doors, windows, rooms and any other items are approximate and no responsibility is taken for any error, omission, or mis-statement. This plan is for illustrative purposes only and should be used as such by any prospective purchaser. The services, systems and appliances shown have not been tested and no guarantee as to their operability or efficiency can be given
Made with Metropix ©2018

Property particulars as supplied by Anthony Webb Estate Agents are set out as a general outline in accordance with the Property Misdescriptions Act (1991) only for the guidance of intending purchasers of lessees, and do not constitute any part of an offer or contract. Details are given without any responsibility, and any intending purchasers, lessees or third parties should not rely on them as inspection or otherwise as to the correctness of each of them. We have not carried out a structural survey and the services, appliances and specific fittings have not been tested. All photographs, measurements, floor plans and distances referred to are given as a guide only and should not be relied upon for the purchase of carpets or any other fixtures statements or representations of fact, but must satisfy themselves by or of fittings, gardens, roof terraces, balconies and communal gardens as well as tenure and lease details cannot have their accuracy guaranteed for intending purchasers. Lease details, service ground rent (where applicable) are given as a guide only and should be checked and confirmed by your solicitor prior to exchange of contracts. no person in the employment of Anthony Webb has any authority to make any representation or warranty whatever in relation to this property.

348 Green Lanes, Palmers Green, London N13 5TJ
020 8882 7888
palmersgreen@anthonywebb.co.uk
anthonywebb.co.uk

