



Hazelwood Lane, Palmers Green, London, N13  
£785,000 Freehold

**Anthony Webb**  
ESTATE AGENTS

# Hazelwood Lane, Palmers Green, London, N13

SPACIOUS FAMILY HOME CLOSE TO SHOPS/STATION. Anthony Webb are pleased to offer for sale this four bedroom Edwardian terrace house within a few minutes' walk of local amenities, Broomfield park and transport links into Moorgate. The property benefits from a spacious through reception room, a 22ft open plan kitchen/diner with doors out to garden, a ground floor guest w.c, spacious landing with access to a loft (potential to convert), an 18ft master bedroom with fitted wardrobes, two further double bedrooms with fitted wardrobes, a single bedroom and a family bathroom. Further benefits include gas central heating, double glazing, off street parking and a beautifully maintained 55ft rear garden with brick built shed. An internal inspection is essential to fully appreciate this lovely period home.

- Four bedrooms
- Edwardian Period House
- Spacious through reception room
- Open plan kitchen/diner
- Bathroom & ground floor guest w.c
- Easy access to amenities & transport
- Off street parking
- Beautiful 55ft rear garden



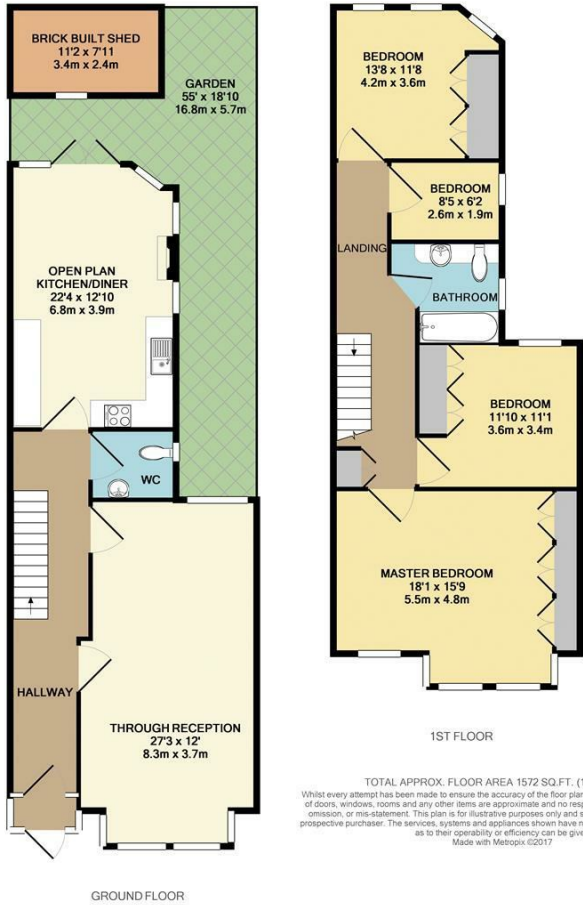
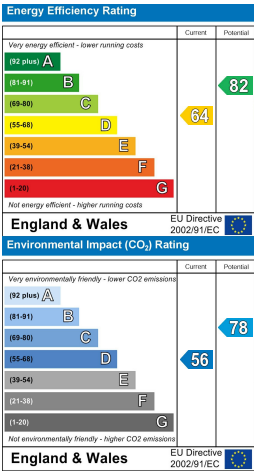






Hazelwood Lane  
Palmers Green  
London  
N13 5HB

Tenure: Freehold  
Gross Internal Area: 1572.00 sq ft



Property particulars as supplied by Anthony Webb Estate Agents are set out as a general outline in accordance with the Property Misdescriptions Act (1991) only for the guidance of intending purchasers of lessees, and do not constitute any part of an offer or contract. Details are given without any responsibility, and any intending purchasers, lessees or third parties should not rely on them as inspection or otherwise as to the correctness of each of them. We have not carried out a structural survey and the services, appliances and specific fittings have not been tested. All photographs, measurements, floor plans and distances referred to are given as a guide only and should not be relied upon for the purchase of carpets or any other fixtures statements or representations of fact, but must satisfy themselves by or of fittings, gardens, roof terraces, balconies and communal gardens as well as tenure and lease details cannot have their accuracy guaranteed for intending purchasers. Lease details, service ground rent (where applicable) are given as a guide only and should be checked and confirmed by your solicitor prior to exchange of contracts. No person in the employment of Anthony Webb has any authority to make any representation or warranty whatever in relation to this property.

348 Green Lanes, Palmers Green, London N13 5TJ  
020 8882 7888  
palmersgreen@anthonywebb.co.uk  
anthonywebb.co.uk

