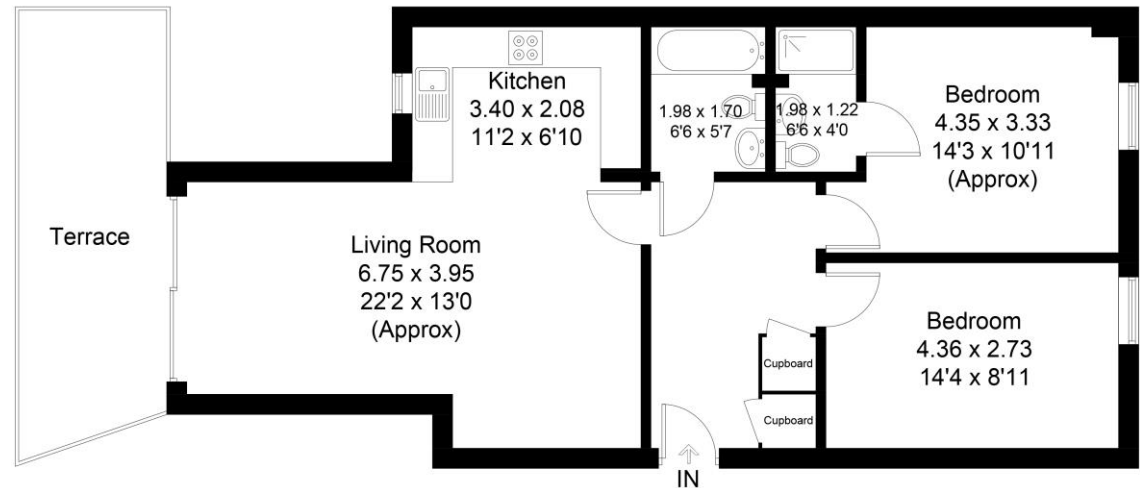






Camberwell New Road

Approximate Gross Internal Area = 76.2 sq m / 820 sq ft



Beresford Residential, Camberwell's leading independent estate agent, are delighted to offer this superb two-bedroom, two-bathroom apartment with a large terrace.

Set in a modern, new build development, the apartment includes a large master bedroom with en-suite bathroom, a spacious second bedroom, and a family bathroom. The extensive living room opens into the kitchen and dining area, and the apartment also benefits from a large private terrace, set away from the road and just perfect for summer evenings.

The property is located within easy reach of Denmark Hill overground station, providing regular services into Central London, and Oval Underground station at the end of Camberwell New Road. Camberwell is fast becoming one of London's most popular locations, for reasons such as Ruskin Park, King's College Hospital and an array of bars, restaurants and cafes. There is a significant amount of redevelopment going into the area which is likely to see property prices increase significantly in the coming years.

beresfordresidential.com

020 7358 7979

