

# Home Guard Farmhouse, Gussage St. Michael, Wimborne, BH21

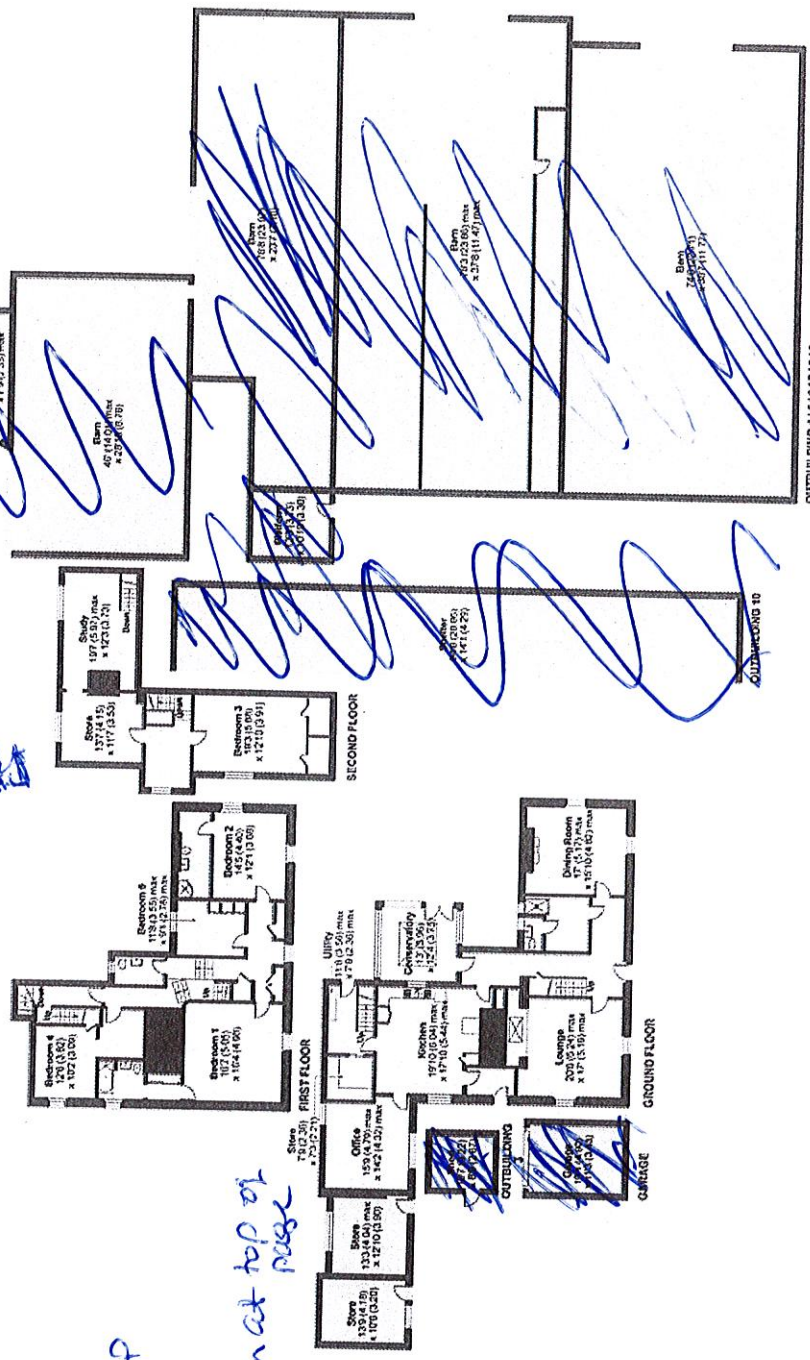
Approximate Area = 4097 sq ft / 380.6 sq m (excludes shelter)  
 Garage = 180 sq ft / 16.7 sq m  
 Outbuildings = 9662 sq ft / 897.6 sq m  
 Total = 13939 sq ft / 1294.9 sq m

For identification only - Not to scale



Flip  
180°  
so north at top of page

also built an enclosure  
top floor  
garage



Floor plans produced in accordance with RICS Property Measurement 2nd Edition, incorporating International Property Measurement Standards (IPMS2 Residential). Produced for Fox Grant. REF: 1465066

Blandford 8 miles, Salisbury 18 miles  
 London Waterloo (2hr 13m) Salisbury to  
 Newbury Airport 17.5 miles

with good schools including Sandroyd, Forres Sandle Manor at Fordingbridge or schools in Salisbury. For further details contact schools and www.1.dorsetforyou.

There are numerous sporting and the local area has numerous bridleways for horse riders and walkers alike. Walkers gardens and Moors Valley Country Park, Wincanton and Newbury. Golf can be enjoyed along with water sports can be enjoyed along with more details.

## HOUSE

requiring improvements is quietly after village of Gussage St Michael.

block in all approximately 1 acre excess of 10,000 square feet/paddock

provide this substantial farmhouse with ings, land, yard and stables.

- Bedroom 2 with double aspect and exposed beam
- Ensuite shower room
- Bedroom 3 with aspect to rear
- Bedroom 4 with interconnecting room/nursery/entrance