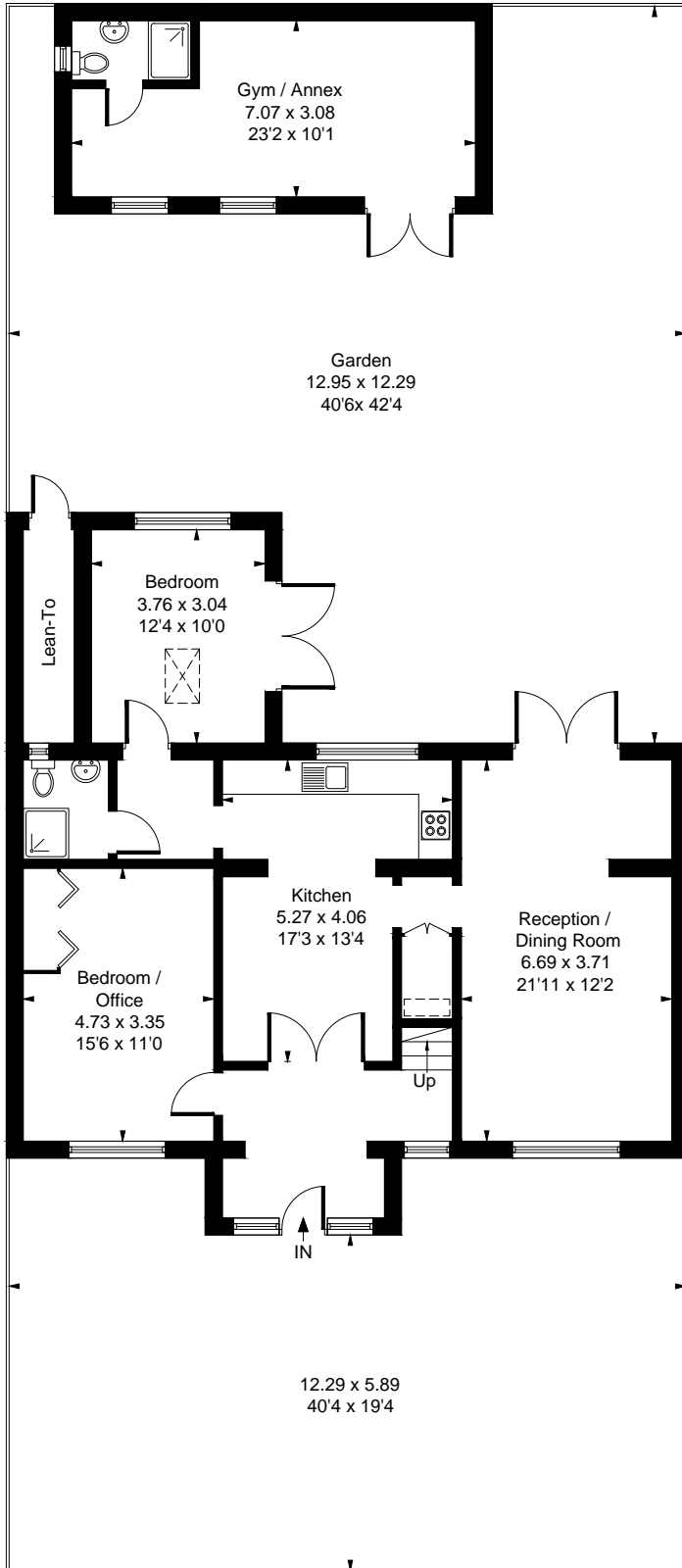


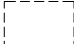
Approximate Gross Internal Area = 167.42 sq m / 1802 sq ft

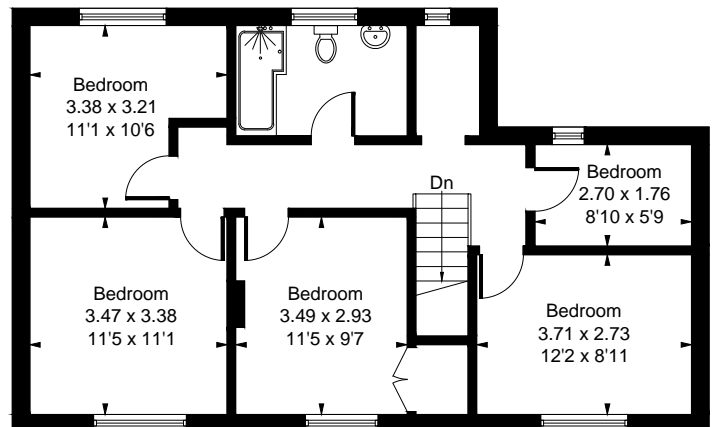
Gym / Annex = 22.33 sq m / 240 sq ft

Total = 189.75 sq m / 2042 sq ft



Ground Floor

 = Reduced headroom below 1.5m / 5'0



First Floor

Whilst every attempt has been made to ensure the accuracy of the floor plan contained here, measurements of doors, windows, rooms and any other items are approximate and no responsibility is taken for any error, omission, or mis-statement. This plan is for illustrative purposes only and should be used as such by any prospective purchaser.

© Vizion Property Marketing Produced for Shaw & Co.