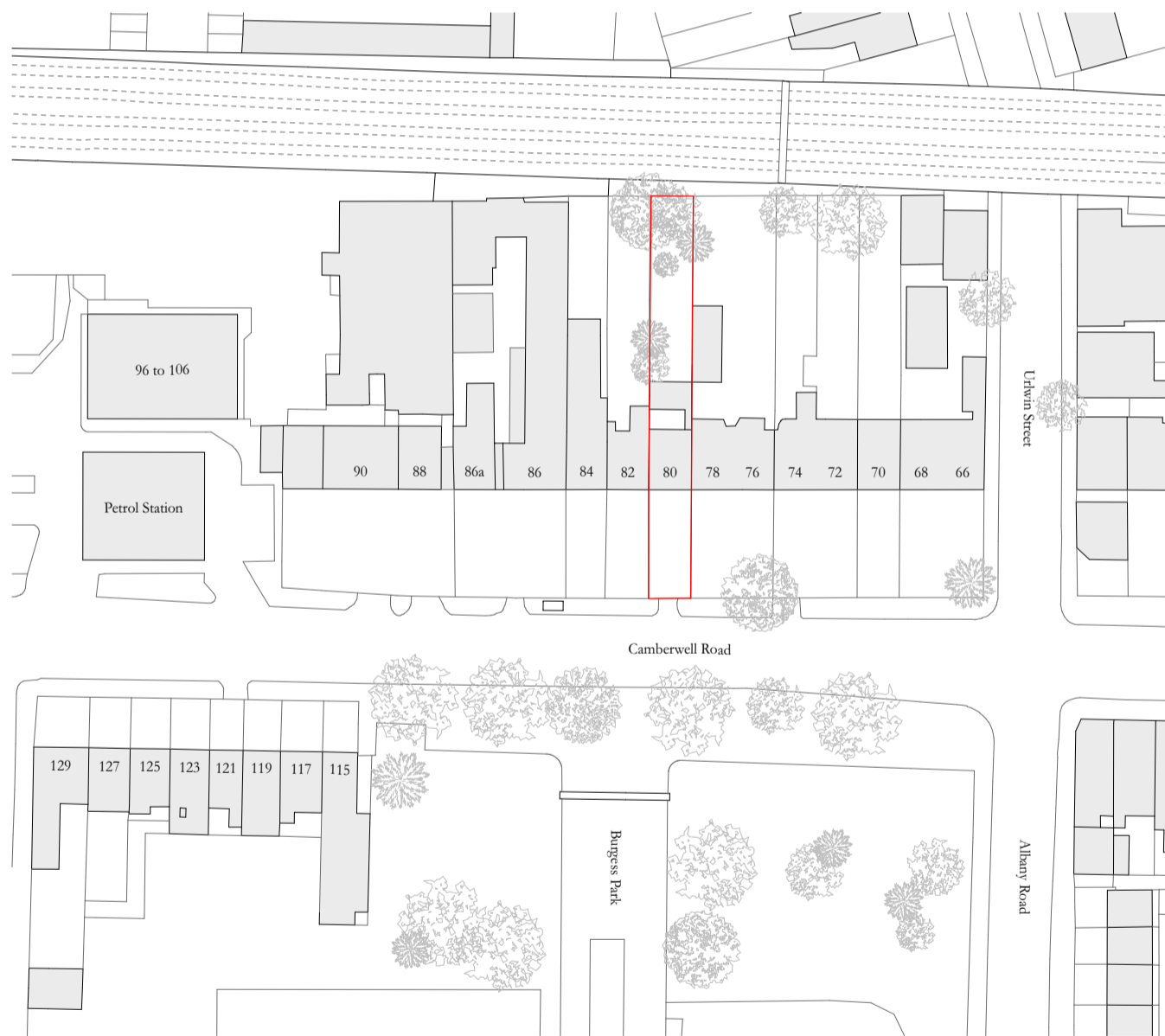
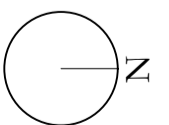
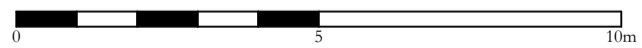


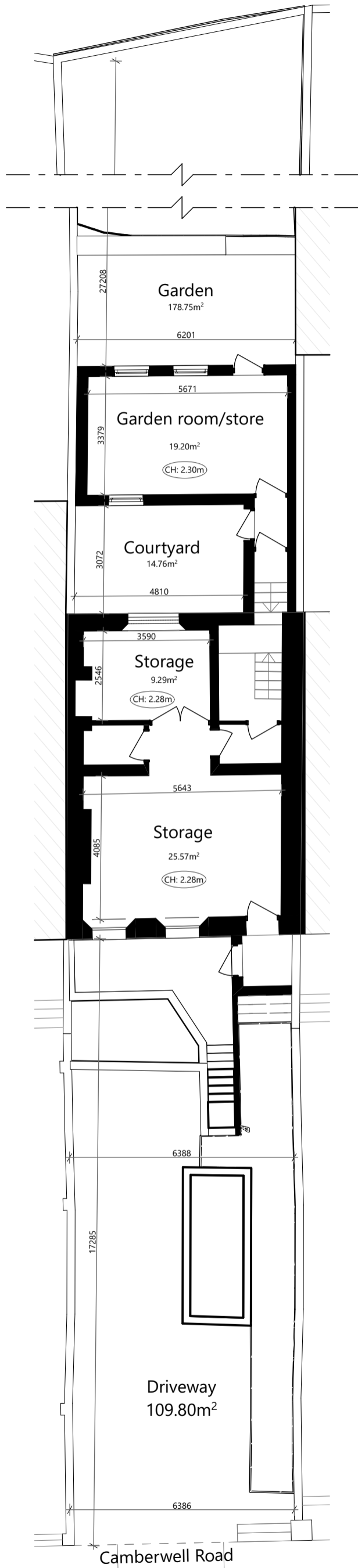
**Sectional Axonometric**



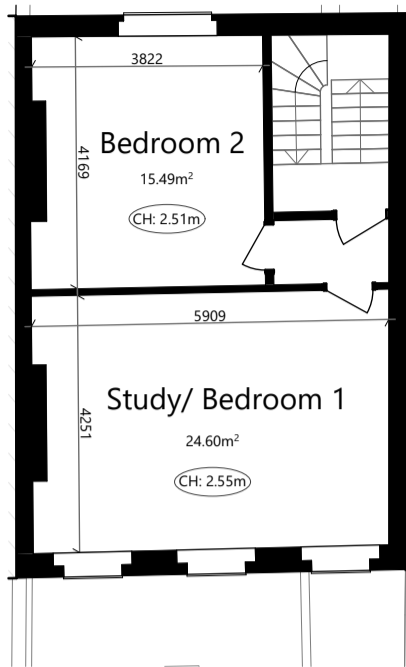
**Site Plan**  
Site boundary shown in red



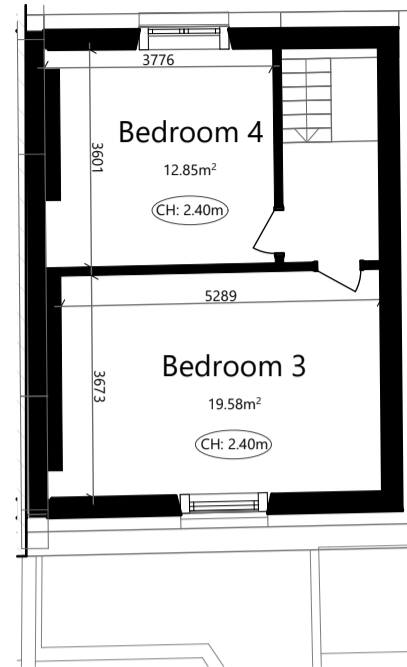
GIA is Gross Internal Area  
 All plans are 1:1000 at A3.  
 All measurements are for indicative purposes only.  
 © Camberwell & Metropolitan (Architecture) Ltd.



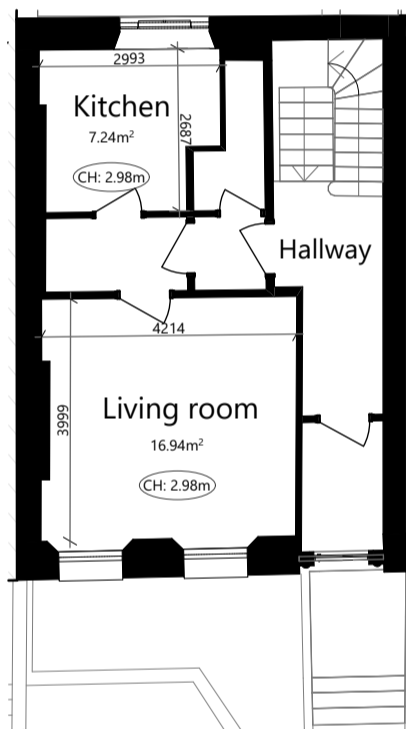
**Lower Ground Floor Plan**  
GIA = 71.81m<sup>2</sup>



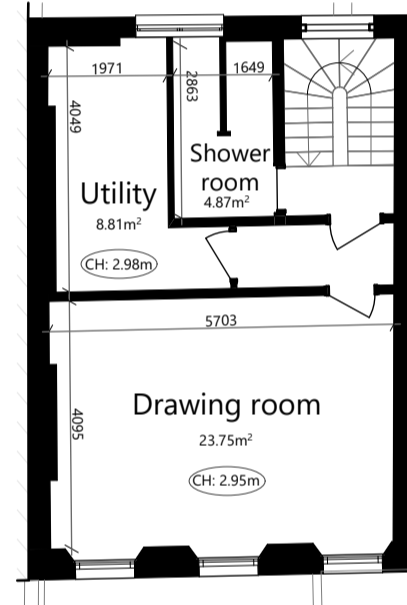
**Second Floor Plan**  
GIA = 49.27m<sup>2</sup>



**Third Floor Plan**  
GIA = 36.90m<sup>2</sup>

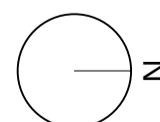


**Ground Floor Plan**  
GIA = 46.13m<sup>2</sup>



**First Floor Plan**  
GIA = 47.65m<sup>2</sup>

Total GIA	251.76m <sup>2</sup>
External Site Area	303.30m <sup>2</sup>
<b>Total Site Area</b>	<b>555.06m<sup>2</sup></b>



GIA is Gross Internal Area  
All plans are 1:125 at A3.  
All measurements are for indicative purposes only.