

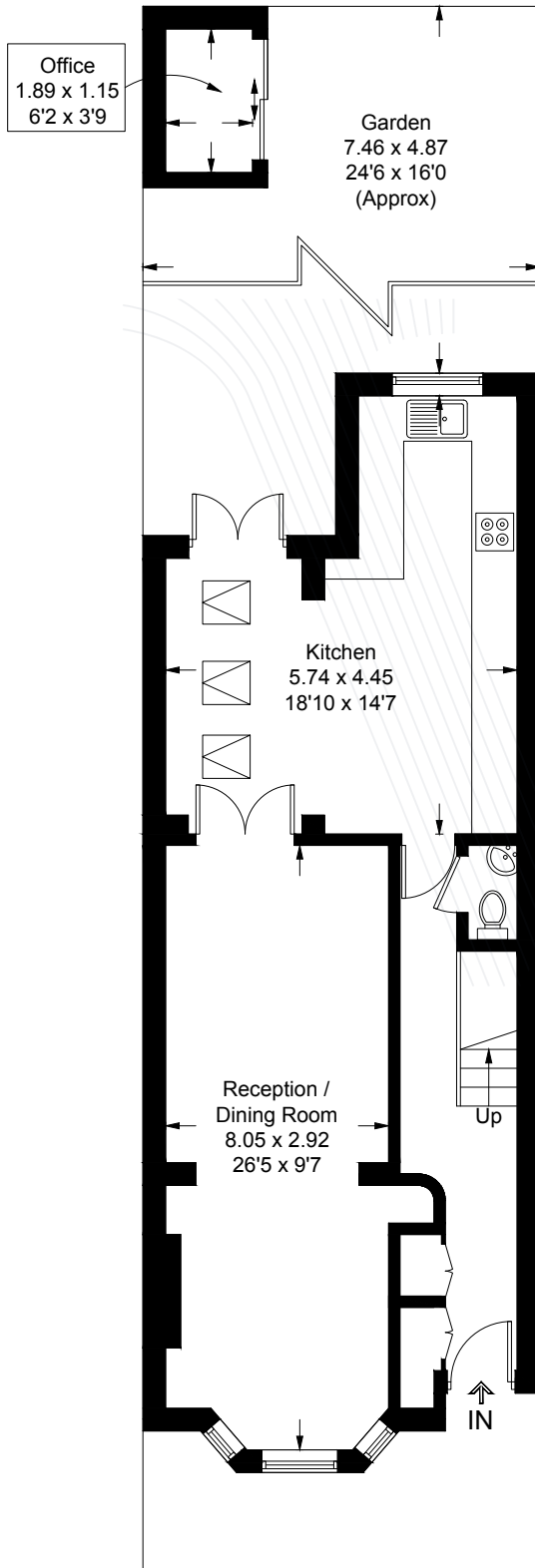
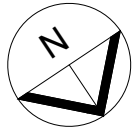
Lillian Road, London, SW13

Approximate Gross Internal Area = 132.1 sq m / 1422 sq ft

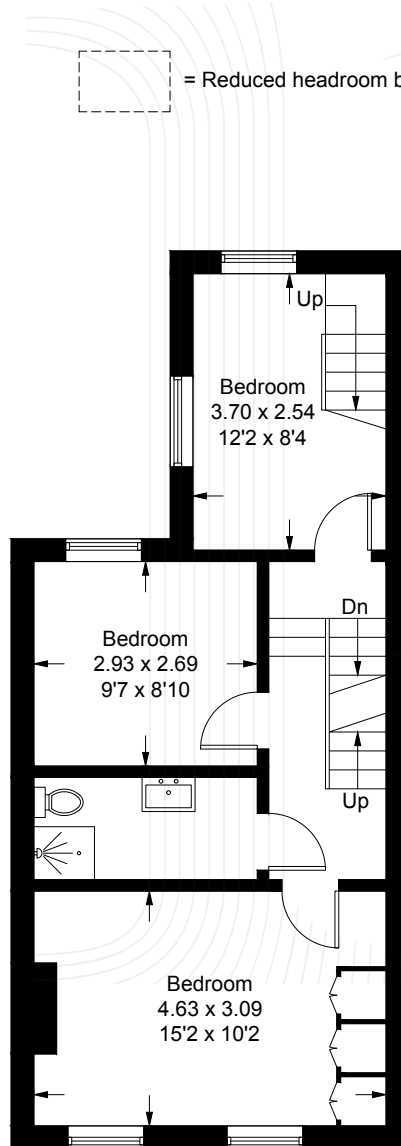
Mezzanine = 6.1 sq m / 66 sq ft

Office = 2.2 sq m / 24 sq ft

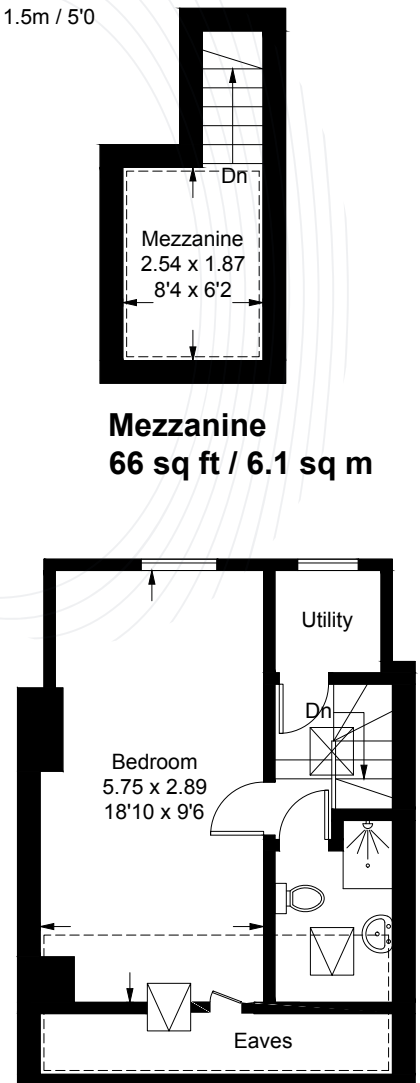
Total = 140.4 sq m / 1512 sq ft



Ground Floor
620 sq ft / 57.6 sq m



First Floor
477 sq ft / 44.3 sq m



Second Floor
325 sq ft / 30.2 sq m