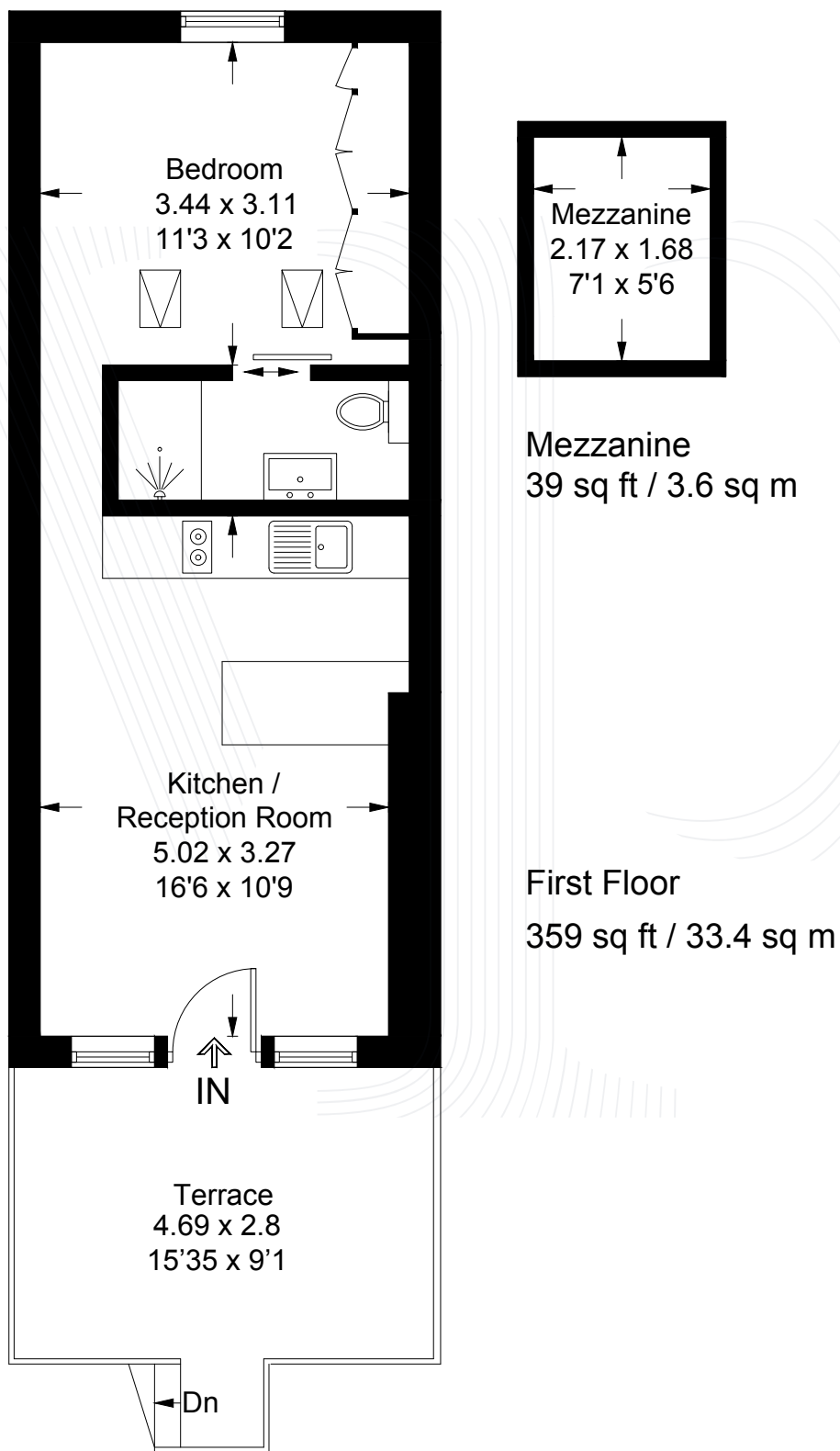
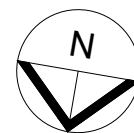


Church Road, London, SW13

Approximate Gross Internal Area = 37.0 sq m / 398 sq ft
(Including Mezzanine)



All measurements are in accordance to the RICS Code Of Measuring Practice.

Measurements are approximate & only for illustrative purposes.

© Property Visual Ltd - info@propertyvisual.com - www.propertyvisual.com