

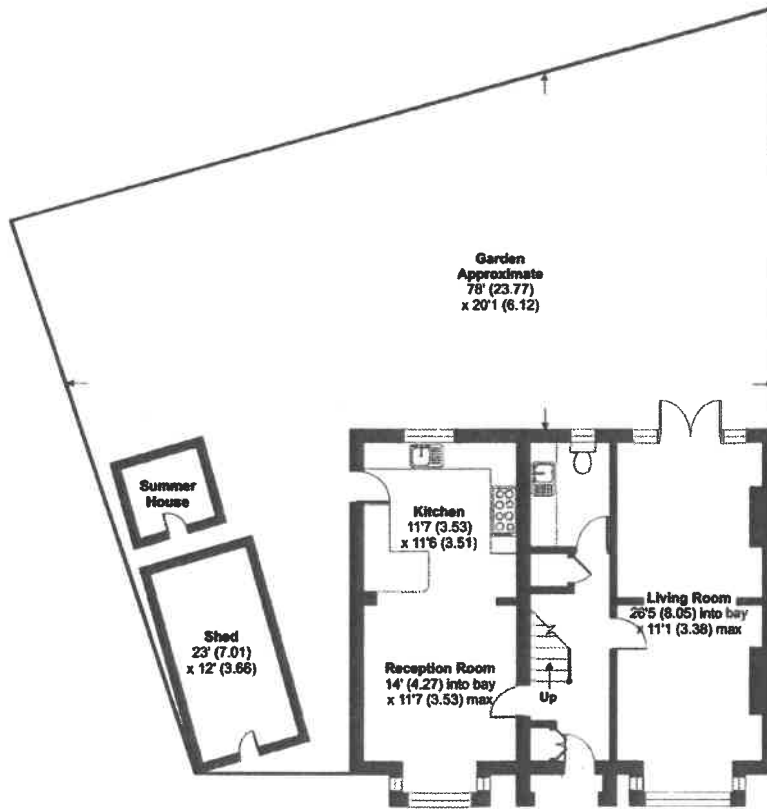
Inverness Road, Worcester Park, KT4

£675,000

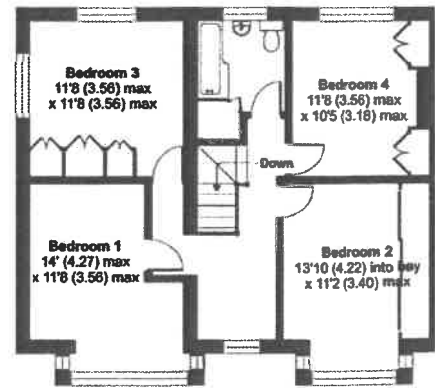
### Floorplan

### Inverness Road, Worcester Park,

Approximate Area = 1741 sq ft / 161.7 sq m (includ  
Outbuilding = 95 sq ft /  
Total = 1836 sq ft / 17  
For identification only



GROUND FLOOR



FIRST FLOOR



Floor plan produced in accordance with RICS Property Measurement Standards incorporating International Property Measurement Standards (IPMS2 Residential). © nichecom 2022. Produced for Andrews Estate Agents. REF: 876670