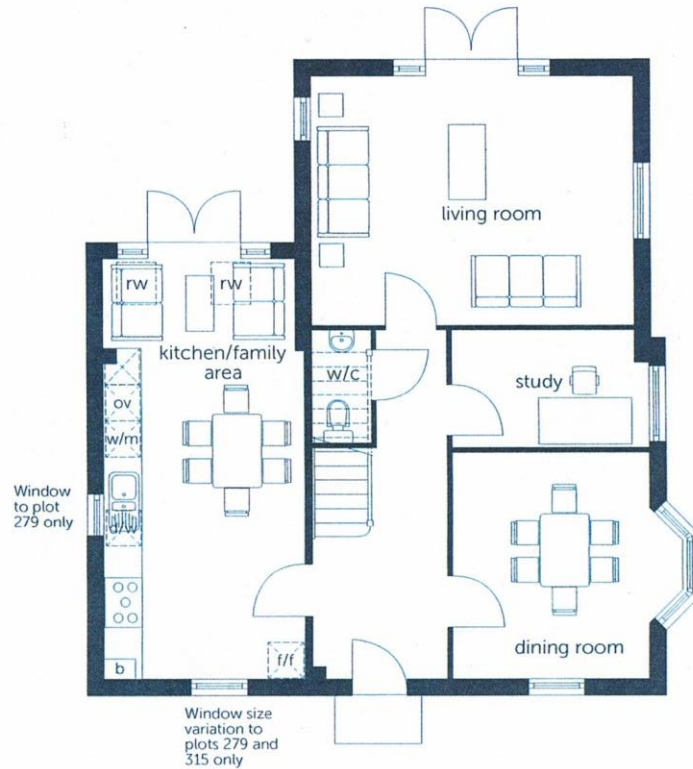


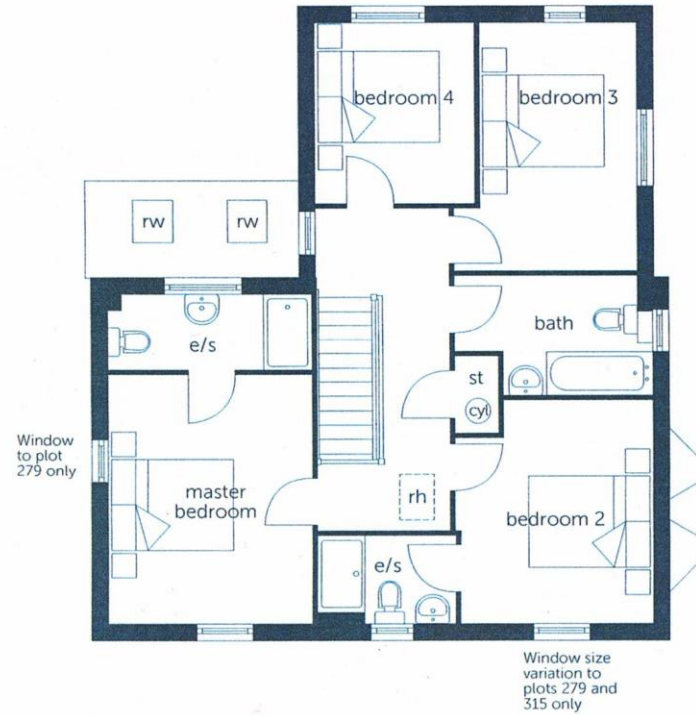
# The Nene

Four bedroom home



## Ground Floor

Kitchen/Family Area	6.759m x 3.224m (max)	22'2" x 10'7" (max)
Living Room	5.183m x 3.973m	17'0" x 13'0"
Dining Room	3.645m x 3.160m (+0.597m bay)	12'0" x 10'4" (+2' bay)
Study	2.932m x 1.871m (min)	9'8" x 6'2" (min)



## First Floor

Master Bedroom	4.004m x 3.273m	13'2" x 10'9"
Bedroom 2	3.589m x 3.091m (max) (min)	11'9" x 10'2" (max) (min)
Bedroom 3	3.982m x 2.527m (min)	13'1" x 8'4" (min)
Bedroom 4	2.891m x 2.563m	9'6" x 8'5"

- b** boiler    **e** electric meter    **st** cupboard    **d/w** dishwasher space    **w/m** washing machine space    **rw** roof window    **rh** roof hatch
- g** gas meter    **cy** hot water cylinder    **e/s** en suite    **f/f** fridge/freezer space    **ov** oven space    --- reduced head height

Some items shown in this key may be subject to change, and positions could vary from those indicated on this floorplan. Please refer to Sales Advisor for details of your selected plot

Computer generated image shown overleaf. External finishes, landscaping and configuration may vary from plot to plot. Please refer to Sales Advisor for further details. All dimensions are approximate and should not be used for carpet sizes, appliance spaces, or furniture. Furniture not to scale and all positions are indicative. Wardrobes are shown to suggest position only, and are not included as standard unless otherwise stated. We operate a policy of continuous improvement and individual features such as kitchen and bathroom layouts, doors, windows, garages and elevational treatments may vary from time to time. Consequently these particulars should be treated as general guidance only and do not constitute a contract, part of a contract or a warranty. 188295/11/18

Bellway Homes Ltd,  
 (Northern Home Counties Division)  
 St Andrew's House, Caldecotte  
 Lake Drive, Caldecotte,  
 Milton Keynes MK7 8LE  
 Telephone 01908 364200  
 Fax 01908 364201  
 www.bellway.co.uk