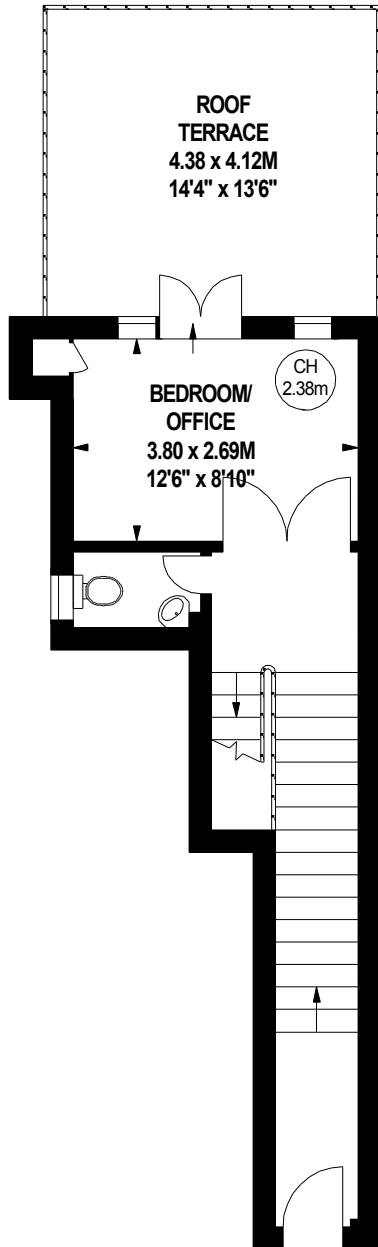
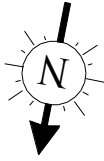


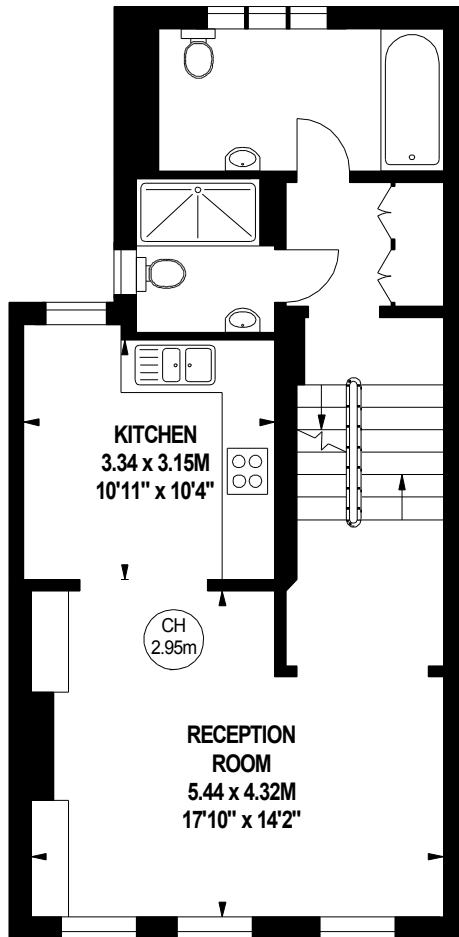
New Kings Road, SW6

Approximate gross internal area

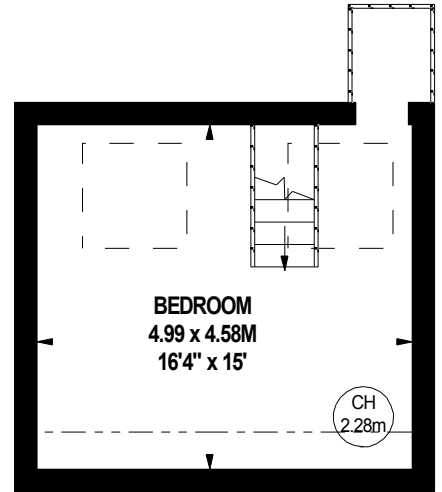
152.36 sq m / 1640 sq ft



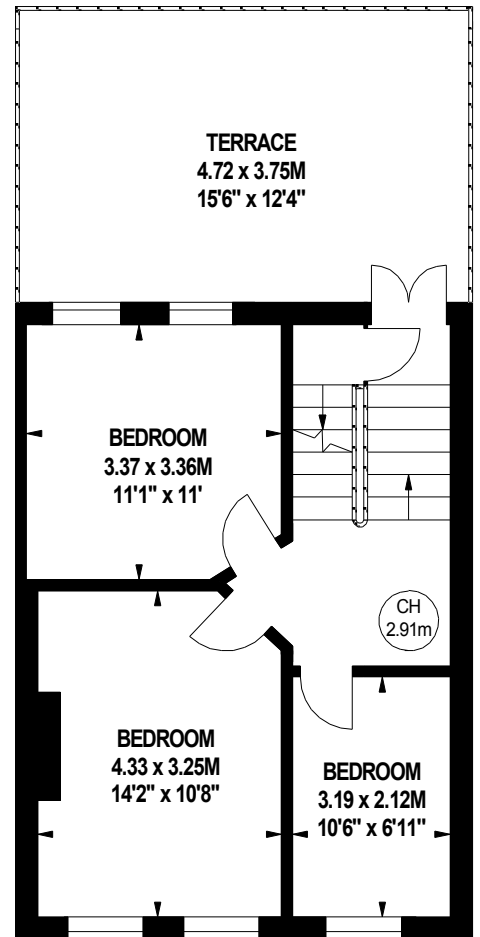
280 sq ft
Ground Floor



639 sq ft
First Floor



248 sq ft
Third Floor



473 sq ft
Second Floor

The floor plan is not to scale and measurements and areas shown are approximate and therefore should be used for illustrative purposes only. The plan has been prepared in accordance with the RICS code of Measuring Practice and whilst we have confidence in the information produced, it must not be relied on.

If there is any aspect of particular importance, you should carry out or commission your own inspection of the property.

Copyright of FeaturePRO.