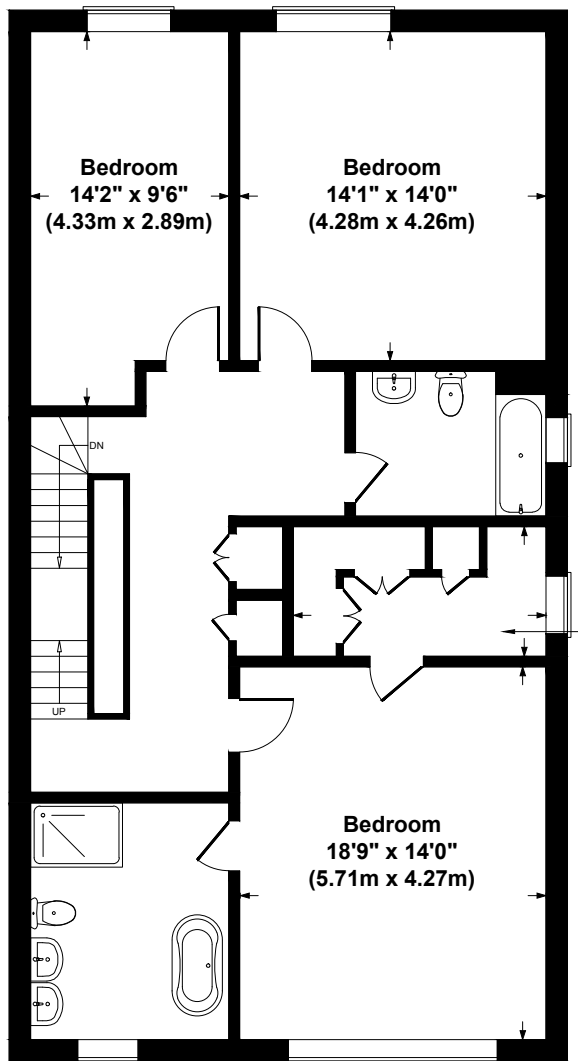
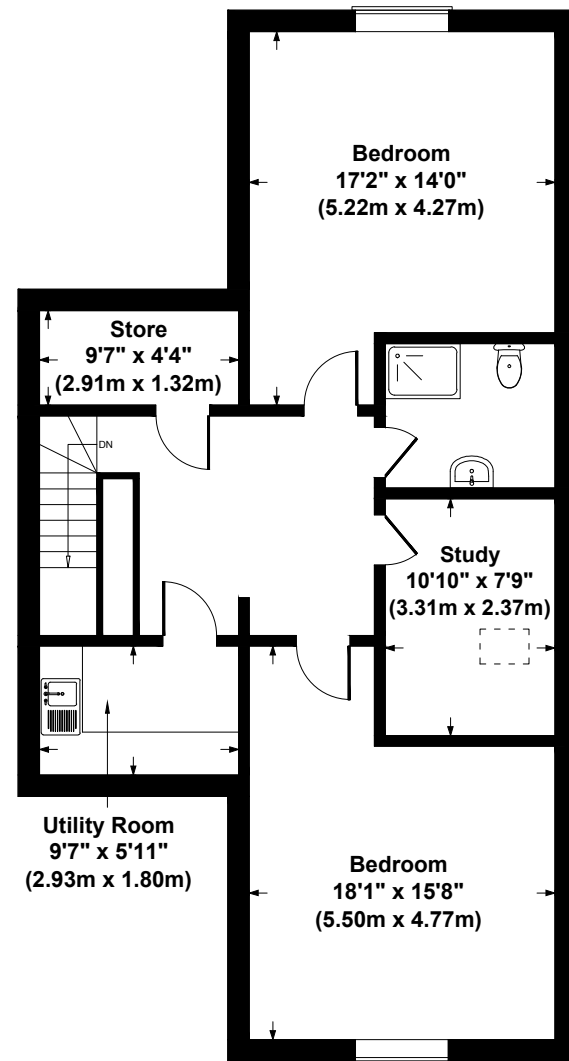


**Ground Floor**



**First Floor**



**Second Floor**

**House C, Victoria Avenue, London, N3**

**Gross Internal Area 2939 sq ft / 273 sq metres**  
**Measurements include floor area below 1.5 metres**  
Not to Scale. Produced by The Plan Portal 2020  
**For Illustrative Purposes Only.**