

# Lower Teddington Road, KT1

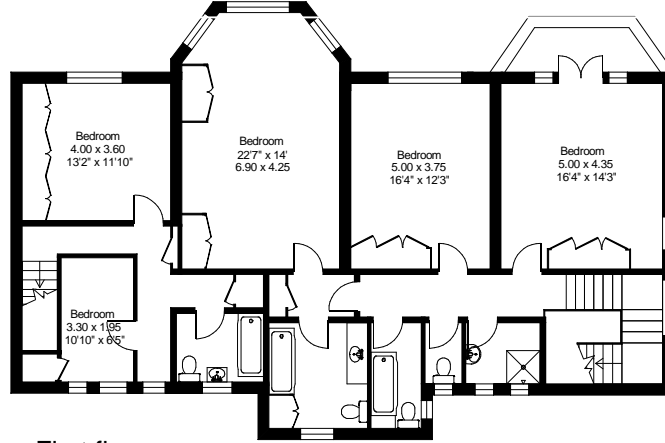
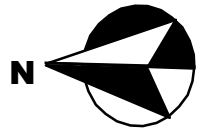
Gross internal area (approx.):

298.2 sq.m. (3210 sq.ft.)

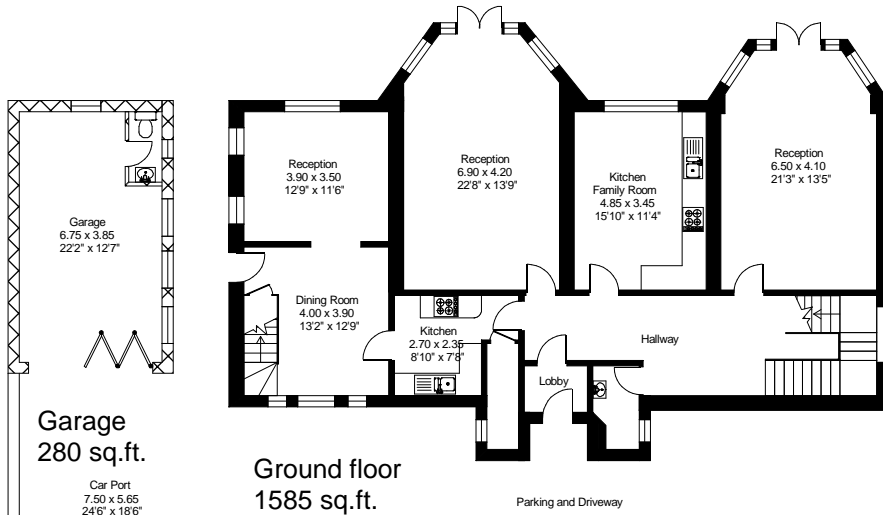
Plus cellar and garage 130 sq.m. (1400 sq.ft.)

For identification purposes only. Not to scale.

Floorplanners ©



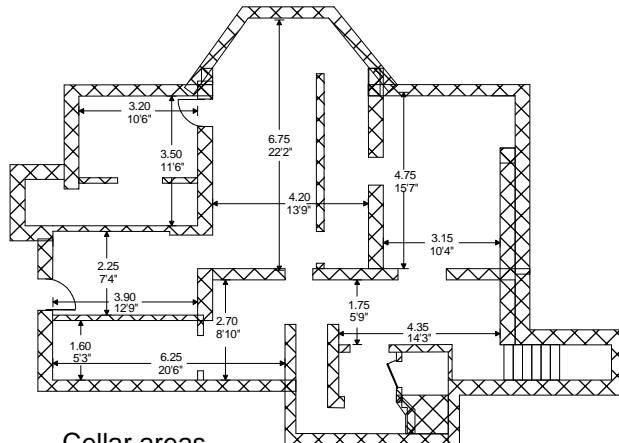
First floor  
1625 sq.ft.



Garage  
280 sq.ft.

Car Port  
7.50 x 5.65  
24'6" x 18'6"

Ground floor  
1585 sq.ft.



Cellar areas  
1120 sq.ft.