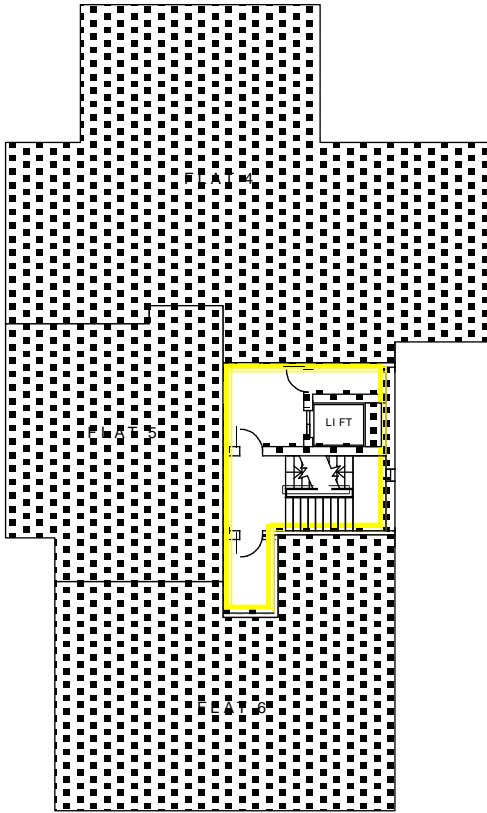
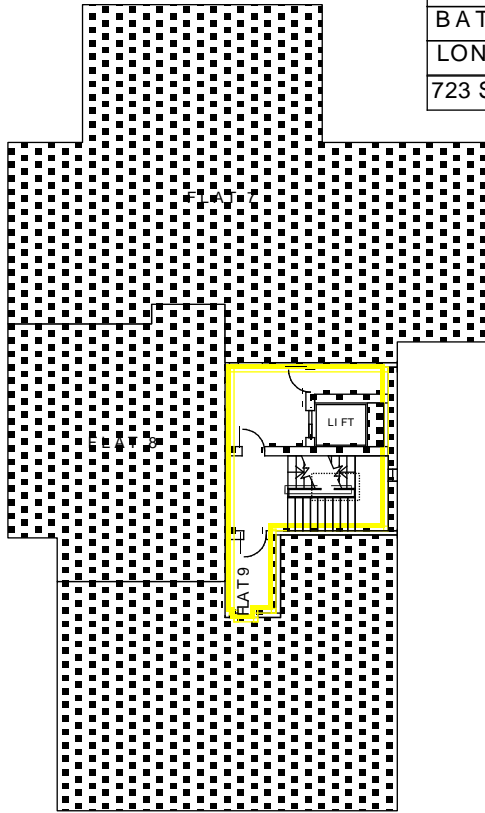


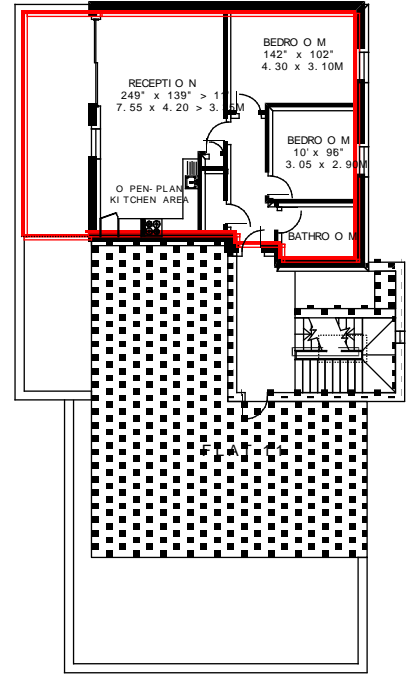
FLAT 10
 117 BATTERSEA HIGH STREET
 BATTERSEA
 LONDON SW 11
 723 SQ FT / 67.2 SQ M



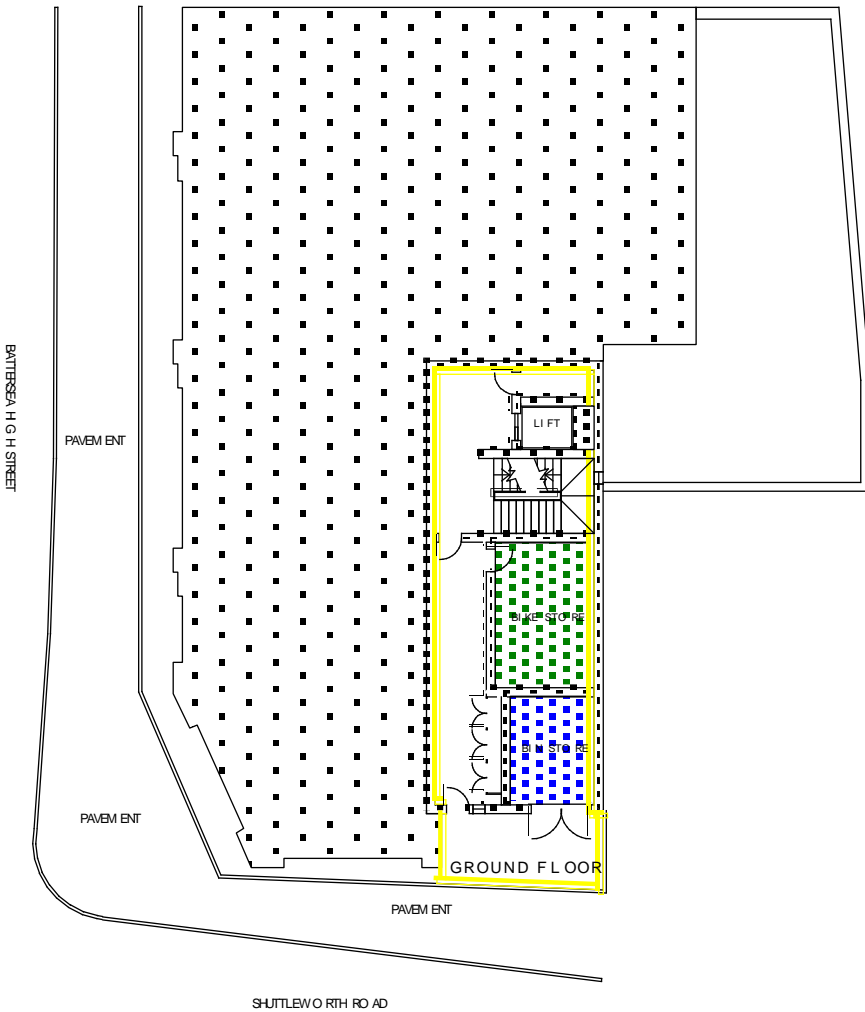
SECOND FLOOR



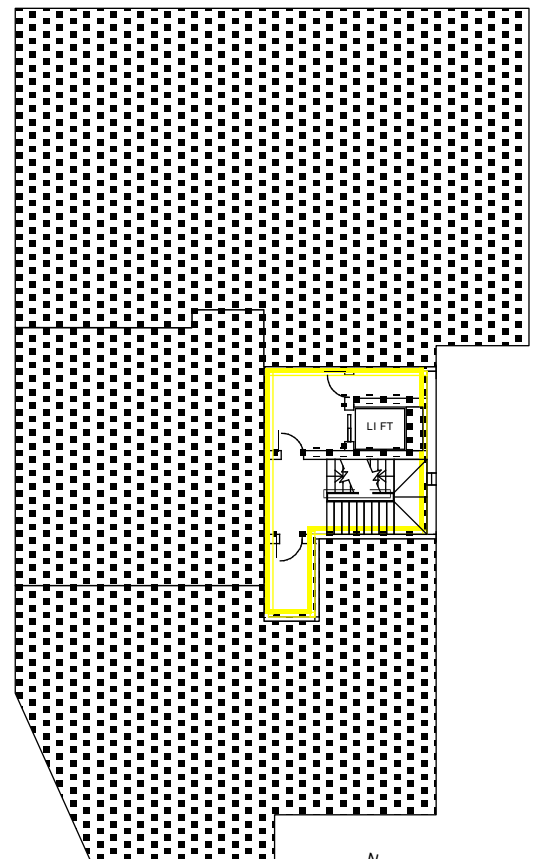
THIRD FLOOR



FOURTH FLOOR



GROUND FLOOR



FIRST FLOOR



SCALE 1:250 on A4

