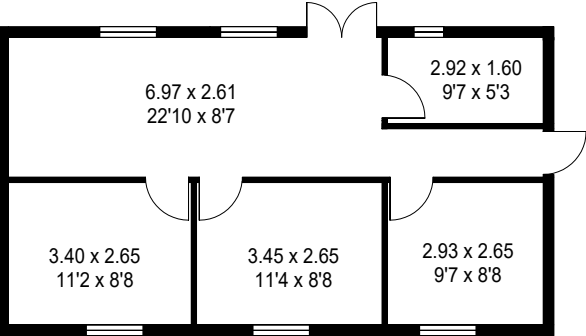
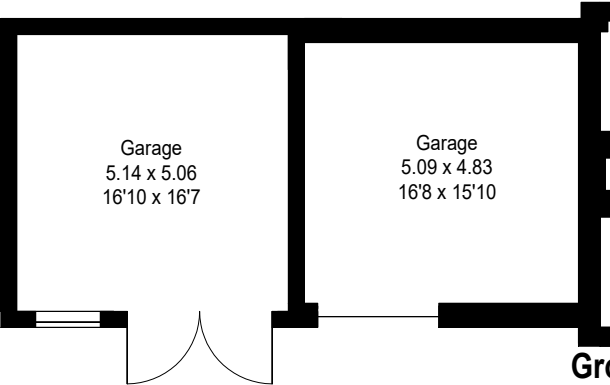


Ferngo, Norton Ferris, Warminster BA12 7HR

Office Approximate Gross Internal Area :- 53 sq m / 573 sq ft

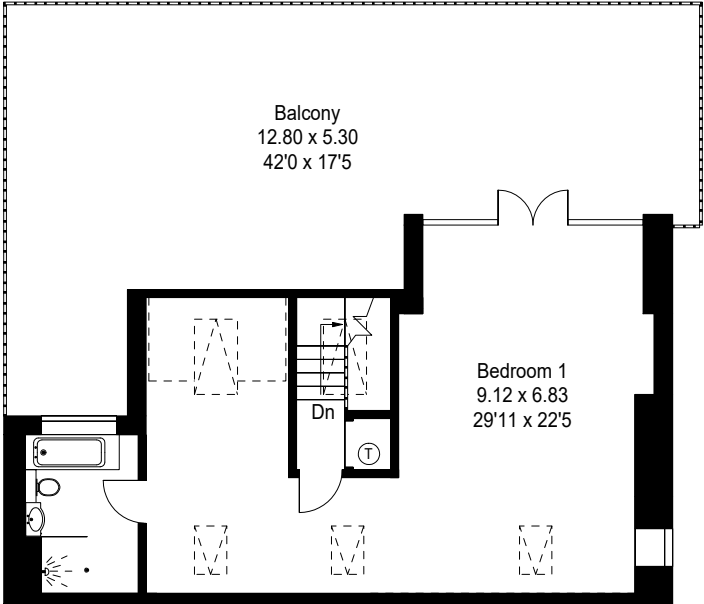
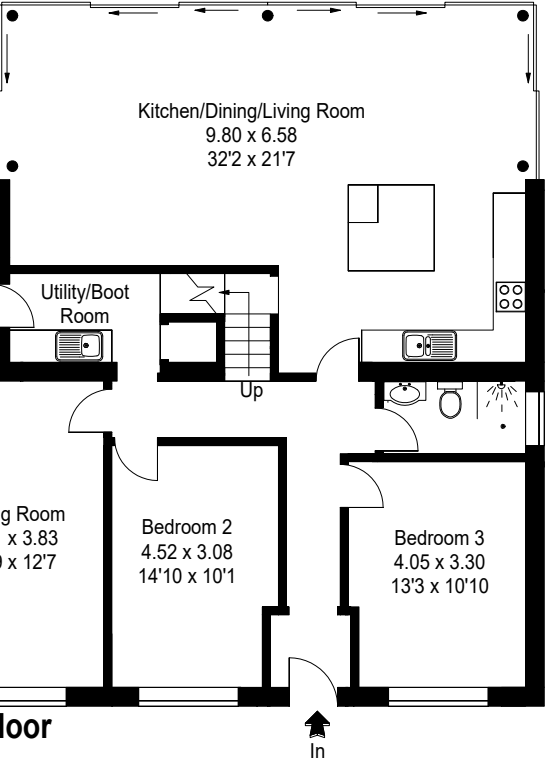


Garages Approximate Gross Internal Area :- 52 sq m / 562 sq ft



Ground Floor

Approximate Gross External Area :- 222 sq m / 2389 sq ft
Approximate Gross Internal Area :- 197 sq m / 2120 sq ft
[---] = Reduced headroom below 1.5 m / 5'0



First Floor

PRODUCED FOR FOX GRANT 2018

This illustration is for identification purposes only. Measured & drawn in accordance with RICS guidelines. Not drawn to scale, unless stated. Dimensions shown are to the nearest 7.5 cm / 3" and are through cupboard / wardrobes to wall surfaces where possible or where indicated by arrow heads. Whilst every care is taken in the preparation of this plan, please check all dimensions shapes & compass bearings before making any decisions reliant upon them.