

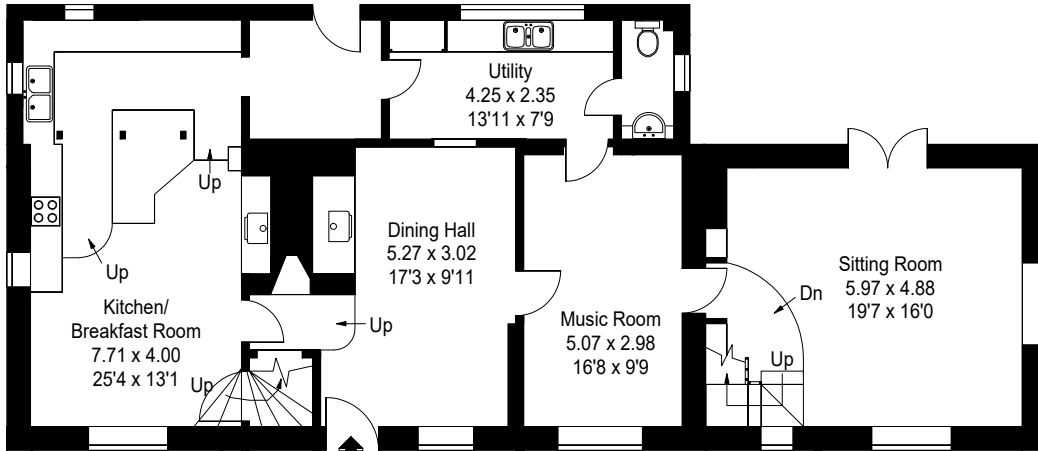
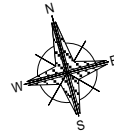
First Floor

Manor Cottage, Stert, Devizes SN10 3JD

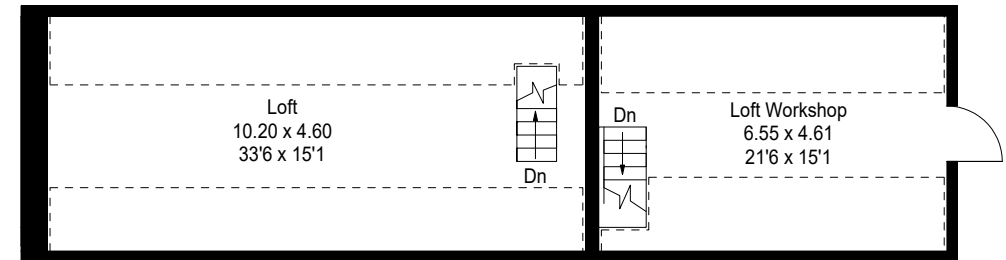
Approximate Gross External Area :- 265 sq m / 2858 sq ft

Approximate Gross Internal Area :- 222 sq m / 2389 sq ft

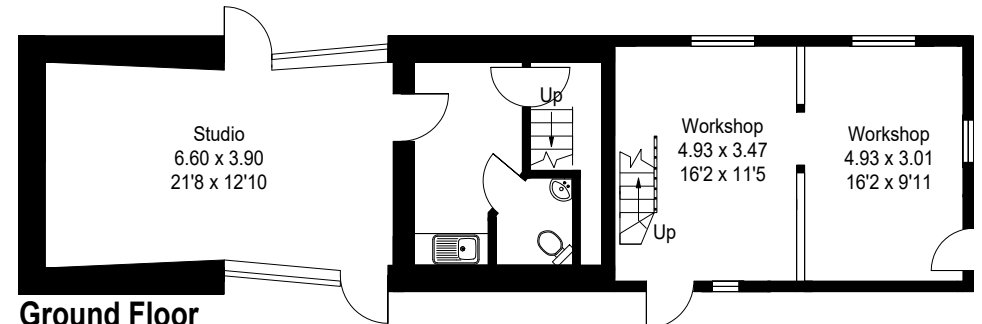
⌈ ⌋ = Reduced headroom below 1.5 m / 5'0



Ground Floor



First Floor



Ground Floor

PRODUCED FOR FOX GRANT 2018

This illustration is for identification purposes only. Measured & drawn in accordance with RICS guidelines. Not drawn to scale, unless stated. Dimensions shown are to the nearest 7.5 cm / 3" and are through cupboard / wardrobes to wall surfaces where possible or where indicated by arrow heads. Whilst every care is taken in the preparation of this plan, please check all dimensions shapes & compass bearings before making any decisions reliant upon them.