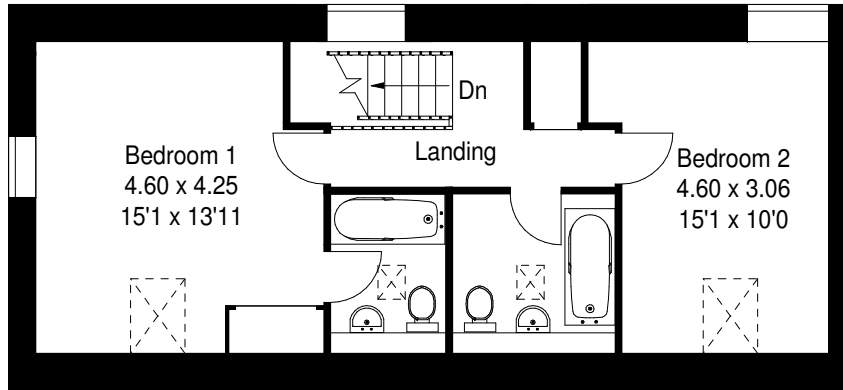
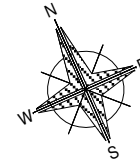


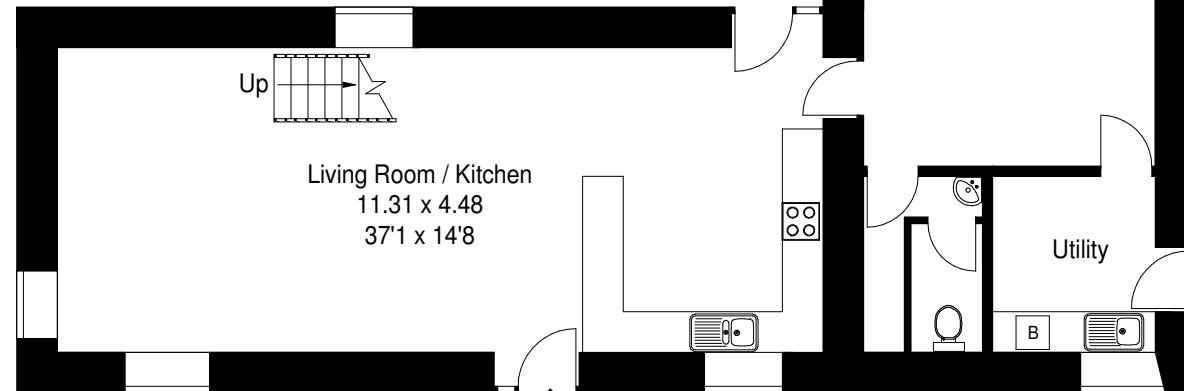
Hidonfield Farm Clayhidon Taunton Somerset EX15 3TJ

Approximate Gross External Area :- 216 sq m / 2325 sq ft

Approximate Gross Internal Area :- 163 sq m / 1750 sq ft



First Floor



Ground Floor

FLOOR PLANS SOUTHERN Ltd ©2013
07710 270108 Ref S8228/BD

This illustration is for identification purposes only. Measured & drawn in accordance with RICS guidelines. Not drawn to scale, unless stated. Dimensions shown are to the nearest 7.5 cm / 3" and are through cupboard / wardrobes to wall surfaces where possible or where indicated by arrow heads. Whilst every care is taken in the preparation of this plan, please check all dimensions shapes & compass bearings before making any decisions reliant upon them.