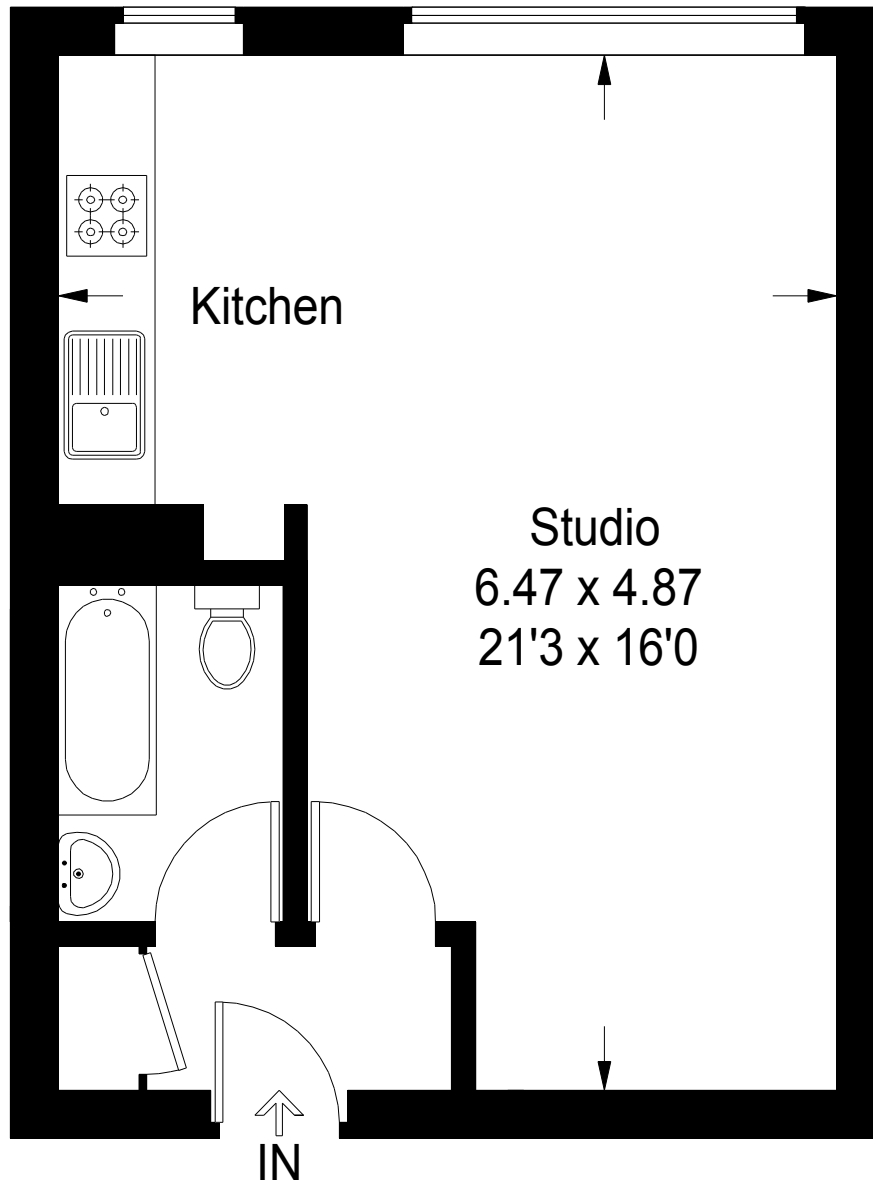
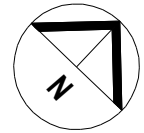


Coysh Court, London, SW15

Approximate Gross Internal Area

31.5 sq m / 339 sq ft



Third Floor

31.5 sq m / 339 sq ft

All measurements are in accordance to the RICS Code Of Measuring Practice. Measurements are approximate & only for illustrative purposes.

© Property Visual Ltd - info@propertyvisual.com - www.propertyvisual.com