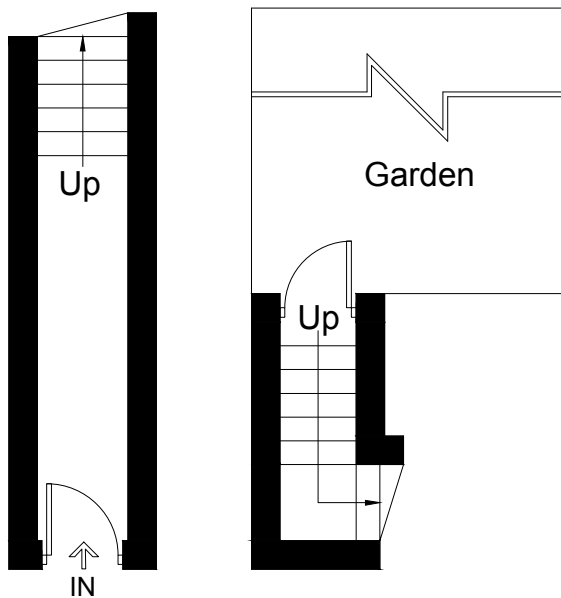
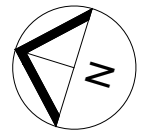
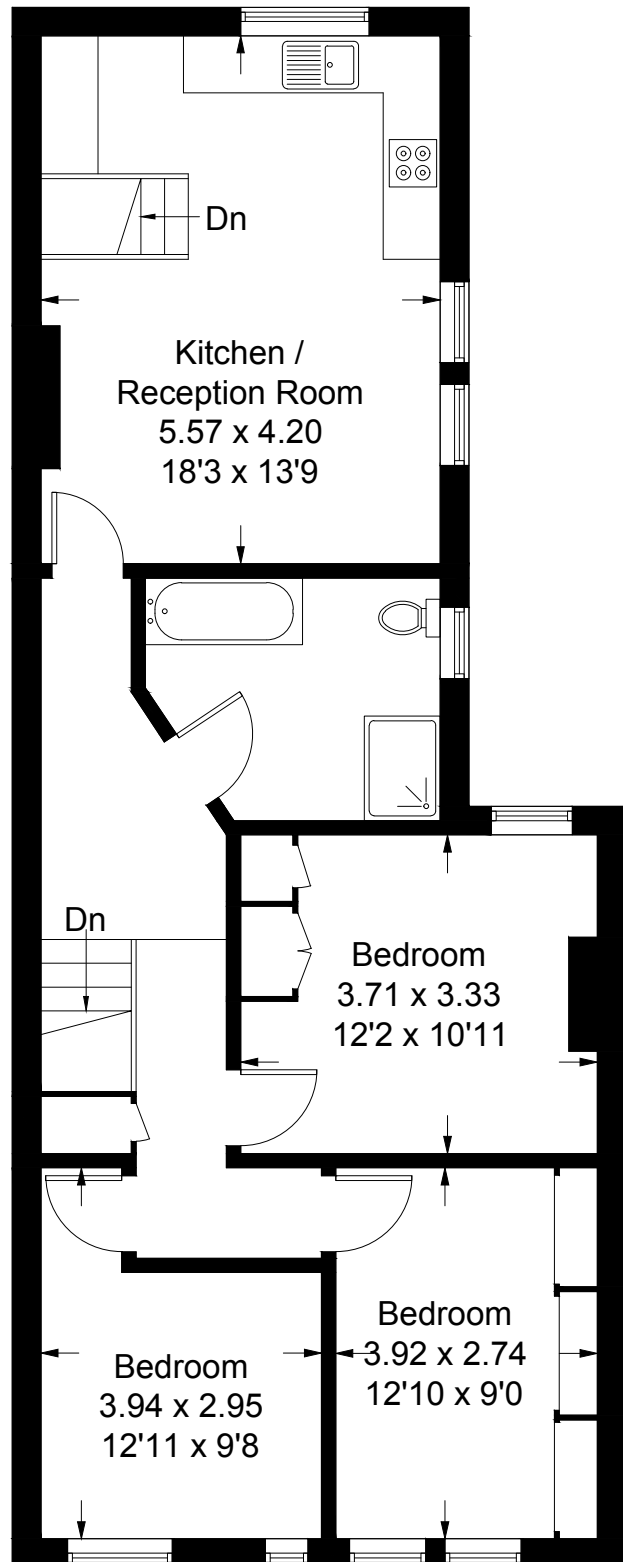


Ashleigh Road, London, SW14

Approximate Gross Internal Area = 86.1 sq m / 927 sq ft



Ground Floor
81 sq ft / 7.5 sq m



First Floor
846 sq ft / 78.6 sq m

All measurements are in accordance to the RICS Code Of Measuring Practice.
Measurements are approximate & only for illustrative purposes.

© Property Visual Ltd - info@propertyvisual.com - www.propertyvisual.com - 01580 241 428