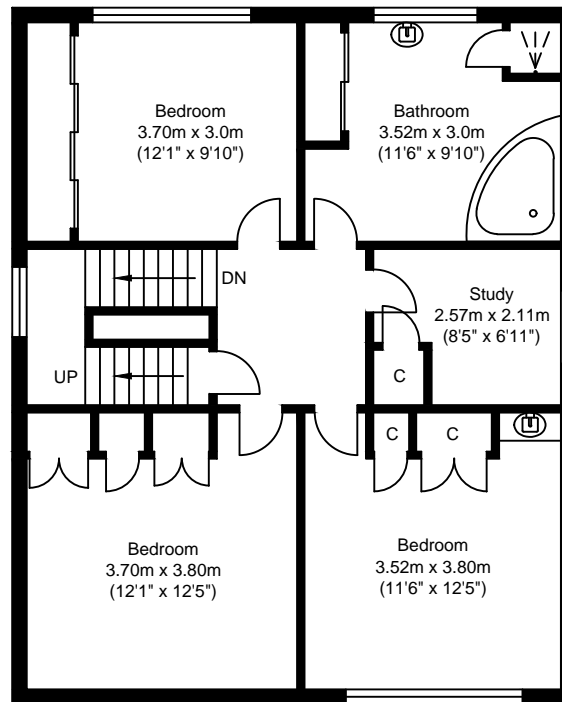
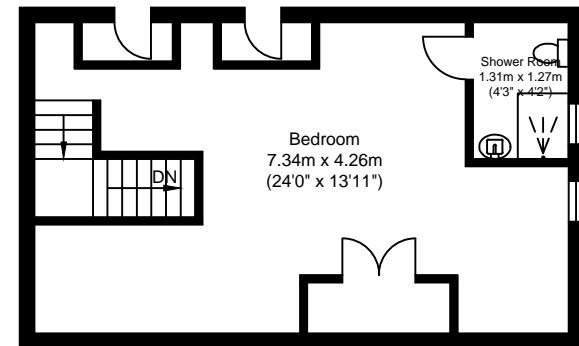


Ground Floor



First Floor



Second Floor

10A Inkerman Road, SL4 6LE

Approx gross internal Floor area of House 197.52 sq. m. (2126.08 sq. ft)

Whilst every attempt has been made to ensure the accuracy of the floor plan contained here, measurements of doors, windows, rooms and any other items are approximate and no responsibility is taken for any error, omissions or mis-statement. This plan is for illustrative purposes only and should be used as such by any prospective purchaser