
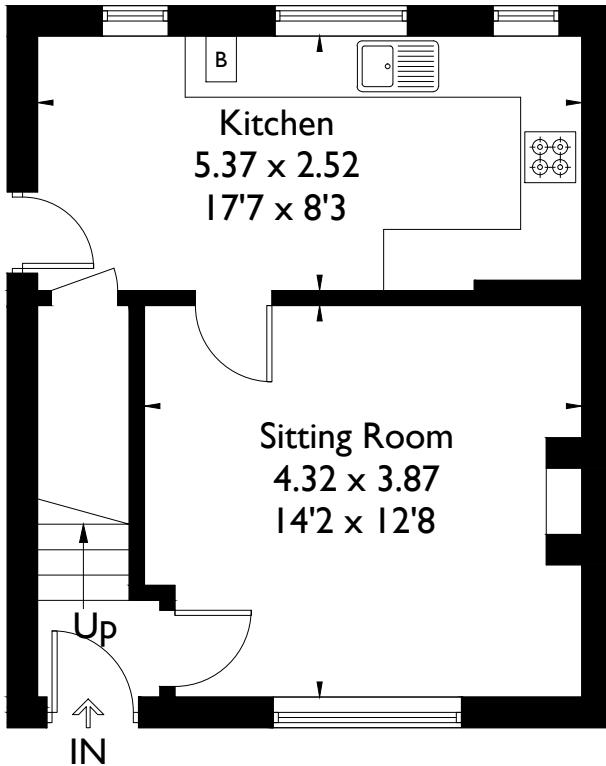


Douglas Road, Kingston upon Thames, KT1

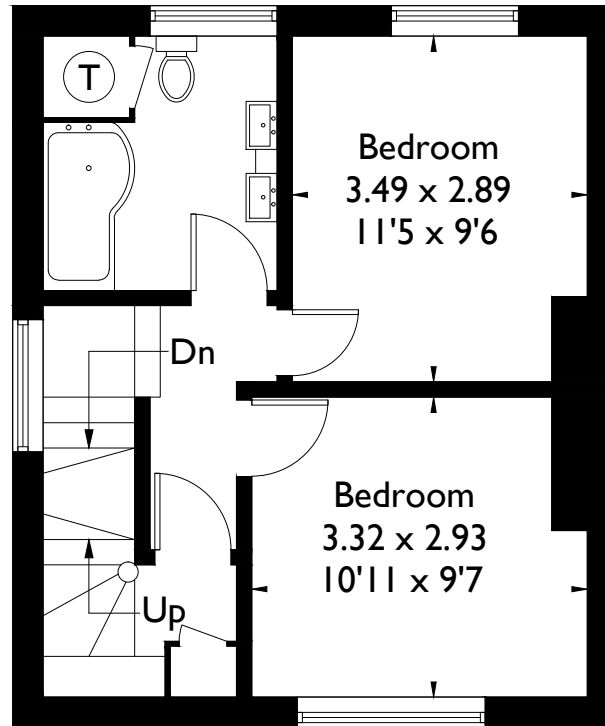
Approximate Gross Internal Area = 92.3 sq m / 993 sq ft



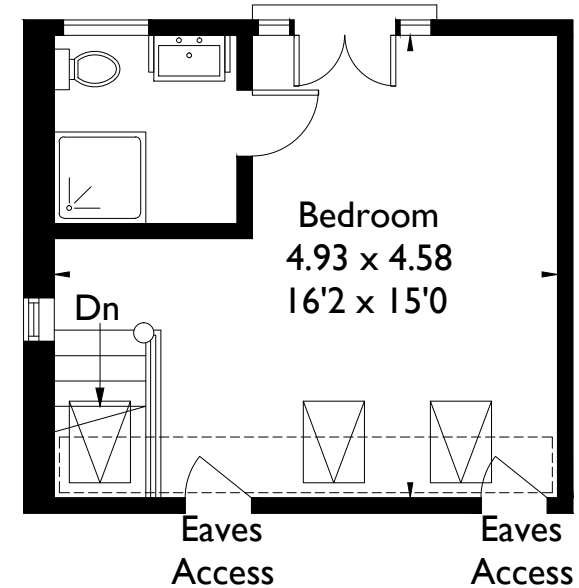
 = Reduced headroom below 1.5m / 5'0



Ground Floor



First Floor



Second Floor

FLOORPLANZ © 2017 0203 9056099 Ref: 193009

This plan is for layout guidance only. Drawn in accordance with RICS guidelines. Not drawn to scale unless stated. Windows & door openings are approximate. Whilst every care is taken in the preparation of this plan, please check all dimensions, shapes & compass bearings before making any decisions reliant upon them.