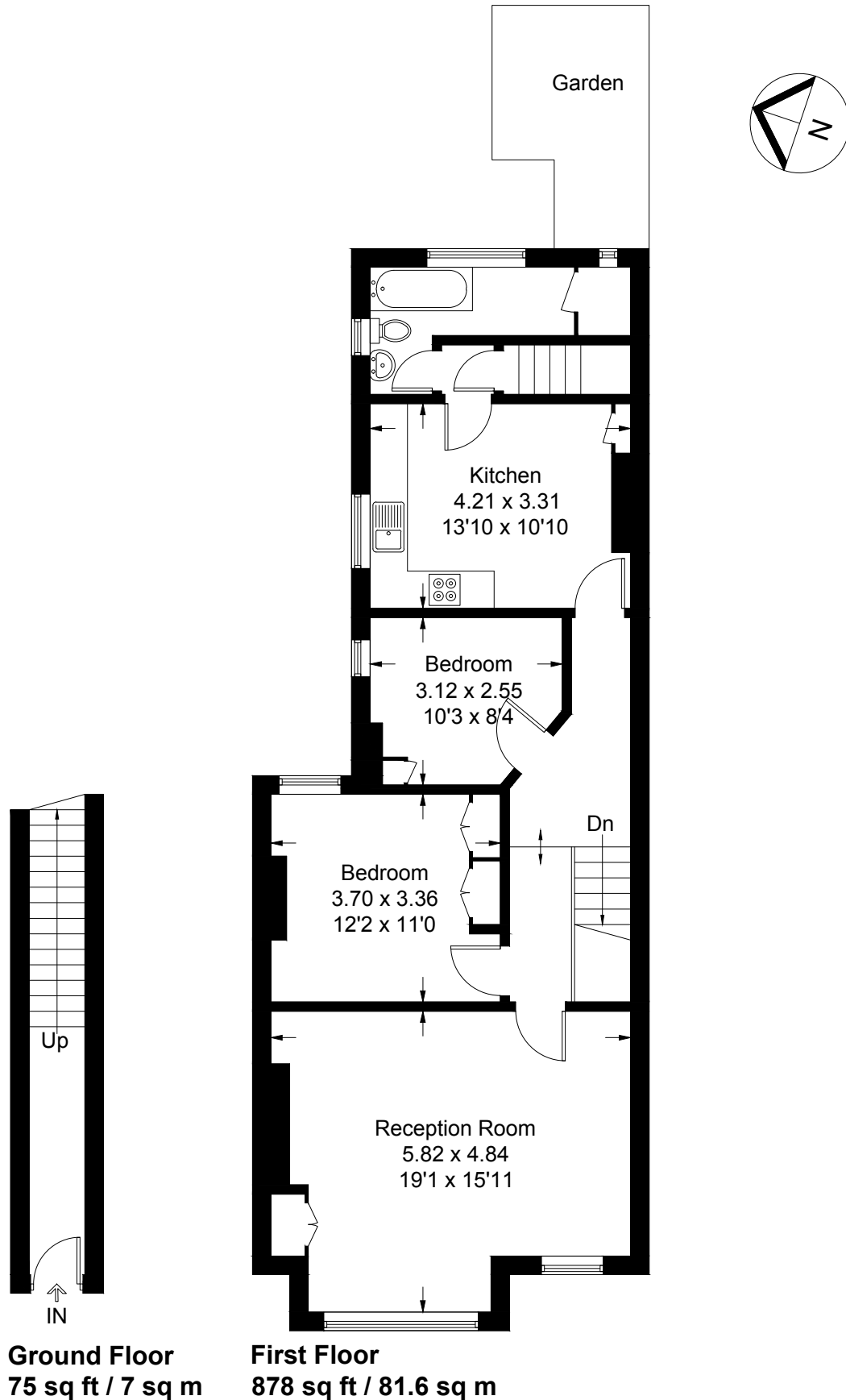


Ashleigh Road, London, SW14

Approximate Gross Internal Area = 88.6 sq m / 953 sq ft



All measurements are in accordance to the RICS Code Of Measuring Practice.
Measurements are approximate & only for illustrative purposes.

© Property Visual Ltd - info@propertyvisual.com - www.propertyvisual.com - 01580 241 428